

DATACARD® CERTIFIED SUPPLIES



DATACARD® DURAGARD® SECUREPRINT LAMINATES FOR USE IN DATACARD® DESKTOP CARD PRINTERS

- Secureprint laminates combine two optically variable devices and are designed to add security and durability to smaller card programs
- Virtual edge-to-edge laminates available for the Datacard® SP75 card printer are the largest CR80 sized laminates in the card industry

SPECIFICATIONS:

Yield:

PRINTER	0.6 MIL LAMINATE
Datacard® SP75 Card Printer	350 laminates
Datacard® ImageCard® IV Card Printer	300 laminates
Datacard® Magna™ Class Card Printers *	300 laminates

* Magna Class Card Printers include:

- Datacard® Magna™ Platinum™ Series Card Printer
- Datacard® ImageCard® Magna™ Class Card Printer With Advanced Imaging Technology™
- Datacard® ImageCard® Magna™ Class Card Printer

Storage and Shipping:

Temperature: 32 – 90 °F (0 - 38 °C)

Humidity: 20 - 70% RH, non-condensing

Sunlight: No direct exposure to sunlight

Secureprint Laminate Dimensions:

PRINTER	WIDTH	HEIGHT	MARGIN **
Datacard® SP75 Card Printer	2.06 inches 52.32 mm	3.31 inches 84.07 mm	0.016 inch 0.40 mm
Datacard® ImageCard® IV Card Printer Datacard® Magna™ Class Card Printers	2.00 inches 50.80 mm	3.25 inches 82.55 mm	0.031 inch 0.79 mm

** Margin is the distance between the edge of the card and the edge of the laminate.

Configurations Available:

- Full card
- Full card with smart card window (SP75 printer only)
- Full card with smart card cutout (ImageCard IV and Magna Class card printers)

Usage Recommendations:

- Datacard Group recommends the use of composite cards with a minimum of 20% polyester core between top and bottom layers of PVC
- When using DuraGard laminates with color ribbon, select a ribbon without a T-panel or deslect the use of the T-panel within the printer driver.

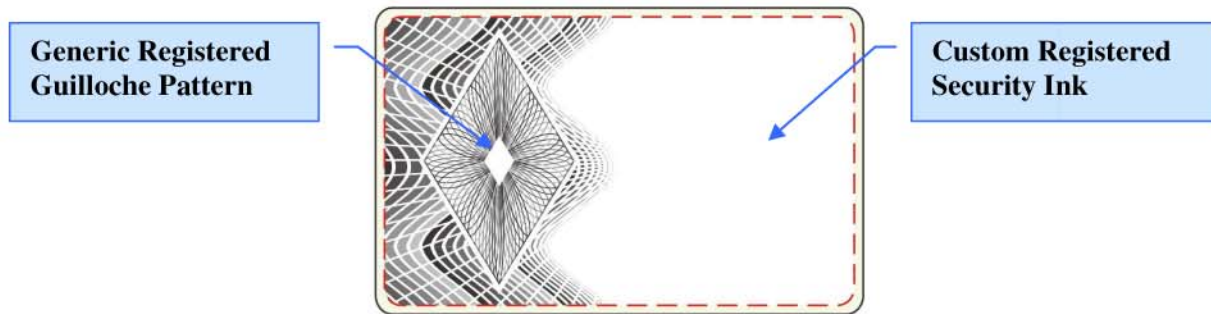


**DATACARD® DURAGARD® SECUREPRINT
LAMINATES FOR USE IN DATACARD®
DESKTOP CARD PRINTERS**

SPECIFICATIONS (continued):

Security Features Available:

- Generic registered guilloche pattern. A complex, fine-line artwork viewable under normal light conditions.
- Custom registered security ink: An overt color shifting pigment that changes from turquoise to red. The ink is transparent so not to obscure any surface printing on the card and contains an ultraviolet (UV) fluorescent pigment that can be illuminated with a black light.



Packaging:

- SP Series Laminates for use in SP75 Card Printer
 - Individual laminates delivered in clear clam-shell package.
 - Laminates are provided on the Datacard distinctive **blue** cores with platinum flecks®.
- Laminates for use in ImageCard IV and Magna Class Printers
 - Individual laminates delivered in clear, sealed bag.

Part Numbers:

Secureprint laminates are custom supplies and are identified by a unique part number. Contact your Datacard sales representative for information on setting up a DuraGard Secureprint Laminate.

YOUR BEST CHOICE FOR SUPPLIES

Protect your investment in Datacard® solutions by using Datacard® Certified Supplies. You can count on Datacard for all your supply needs. We engineer superior performance and reliability into every system-matched supply item we offer. For you, that means smooth printing, brilliant image quality, high security and exceptional performance. Worldwide representation creates a fast, direct connection with the supplies and support you need, when and where you need them.



Datacard, ImageCard, Magna, Platinum, Advanced Imaging Technology, the Color Blue with Platinum Flecks, and the Datacard Certified Supplies icon are trademarks, registered trademarks or service marks of DataCard Corporation in the United States and/or other countries. The color blue with platinum flecks is a registered trademark of DataCard Corporation in the European Union and/or other countries.

© 2005 DataCard Corporation. All rights reserved.

Specifications subject to change without notice.

SG5-6002



RACO Card Solutions
5480 Creek Road
Cincinnati, Ohio 45242
info@racocard.com
www.racocard.com
1-866-940-7226